

DISCOVER KAGA

Explore the Hidden Gems of KAGA

visitkaga.jp 

Rabea Gebler

Artisan / Based in Yamanaka Onsen



ONSEN Soak in Kaga Onsen's Healing Waters, Surrounded by Nature's Beauty

Hot springs are fed by geothermal waters, and Kaga's are believed to have several healing properties. The idyllic onsen towns of Yamanaka, Yamashiro and Katayamazu Onsen offer visitors the chance to relax in the rejuvenating waters, in beautiful surroundings.



Yamanaka Onsen

Hidden in the mountains along the Daishoji River lies the scenic town of Yamanaka Onsen. In an open square at the heart of the town, you'll find Kiku no Yu, a historic public bathhouse that has been welcoming visitors for 1300 years. Take a moment to appreciate the scenery, considered some of the most spectacular in the region. Be sure to stroll down Yuge Kaido Street, where you can shop for local specialties such as Yamanaka lacquerware and sake.



Yamashiro Onsen

Nestled at the foothills of the sacred Mount Hakusan, Yamashiro Onsen is home to historical sites and the renowned Kutani-yaki porcelain, famous for its intricate patterns. In the town centre, you'll find Ko-soyu, a unique bathhouse that spectacularly recreates the architecture and bathhouse culture of the Meiji period (1868-1912).



Katayamazu Onsen

Katayamazu Onsen is a serene town located on the tranquil shores of Lake Shibayama, offering restorative hot springs, resplendent views, and fireworks on the lake every night in the month of August. Cycle around the lake on a scenic 7km bike trail, or take advantage of boat rides, fishing and kayaking excursions available from spring to autumn.

Explore the Hidden Gems of KAGA

Stretching from the Sea of Japan's curving coastline up into rugged, mountainous terrain, impossibly picturesque Kaga enjoys the best of all worlds.

Flourishes of the area's rich historical, cultural and artistic heritage are everywhere to be seen. From relaxing hot springs and magnificent vistas, to natural wonders and the freshest seafood around, Kaga offers it all.

CRAFTS & CULTURE Two of the Most Respected and Graceful Crafts in Japan

Japan has a long history of arts and crafts, and the Kaga City area is the birthplace of some beautiful, traditional craft forms.

Two examples of these are the celebrated Kutani-yaki and Yamanaka lacquerware, both of which have been carefully preserved for centuries, and still thrive today.

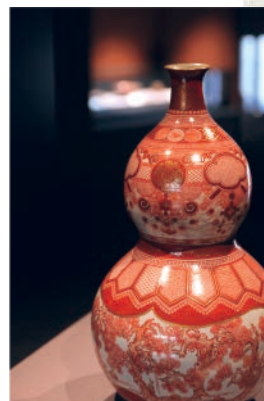
Yamanaka Lacquerware

Glossy and glistening wooden wares line the gallery and shop walls of various establishments in the picturesque Yamanaka Onsen. They are examples of Yamanaka lacquerware, the pride of the Kaga City area, and renowned across Japan. The term 'Yamanaka lacquerware' refers to both the traditional craft and the creations themselves, specifically, hand-crafted wooden items which are then coated in lacquer.



Kutani-yaki Porcelain

'The King of Overglaze Porcelain' is the title often given to the traditional Japanese porcelain otherwise known as Kutani-yaki. The name refers to both the craft and the creations themselves. Artisans employ the same potting and glazing methods today as they did hundreds of years ago, and the techniques are specific to Kutani-yaki, making it a hugely respected and protected craft.



Admire Kaga's Exquisite Nature, the Best of Land and Sea LANDSCAPE

In Kaga, you can explore dynamic coasts and beautiful mountain valleys. You can also experience the historical townscape and buildings, as well as the original Japanese landscape, which is rarely seen today.

Kakusenkei Gorge

Yamanaka Onsen has always been loved by many for its enchanting landscape created by mountains and rivers. A short walk from its town centre, Kakusenkei Gorge is a lush green area that enjoys the clear stream of the Daishoji River, graceful waterfalls, and soothing bird calls. Stop by to relax at "Kawadoko Cafe", a riverside cafe with bright red parasols and tatami seating, available from April to November.



Hashitate

On a section of Kaga's rolling coastline perches the charming fishing village of Hashitate, an area designated as Japan's important preservation district for groups of traditional buildings. Beyond the harbor is where visitors come face to face with Hashitate's great maritime legacy. Within a labyrinth of winding backstreets, there are remnants of the town's prosperous past: the lavish mansions that once belonged to the prominent Kitamaebune ship owners. Only a ten minutes' walk from the village, Cape Kasa no Misaki offers an exhilarating immersion into nature.



Higashitani Area

The reddish tiles and chimneys are renowned features of Higashitani's rustic townscape. These traditional houses have not changed much during the past century, preserving the quiet and beautiful scenery of the mountain village. Designated as an Important Preservation District for Groups of Traditional Buildings, a visit here is a rare opportunity to catch a glimpse of traditional Japanese mountain life.



Daishoji

Running through the town centre of Daishoji, which once flourished as a castle town, the Kyu-Daishoji River is a branch of the Daishoji River originating from Mt. Dainichi. Traces of the original castle town are everywhere along the river particularly between Enuma Shrine and Mizumori Shrine. Seasonal highlights, such as springtime cherry blossoms and red spider lilies in early autumn, provide memorable moments.



Celebrate Local Cuisine GASTRONOMY

From snow crab to wild duck, Kaga is renowned for its mouth-watering seasonal delicacies. Its proximity to the Sea of Japan means also an abundance of fresh and varied seafood year round. And further inland, the melting glaciers of Mount Hakusan helps the region produce some of the highest quality sake.



Kaga Parfait



Wild Duck



Snow Crab



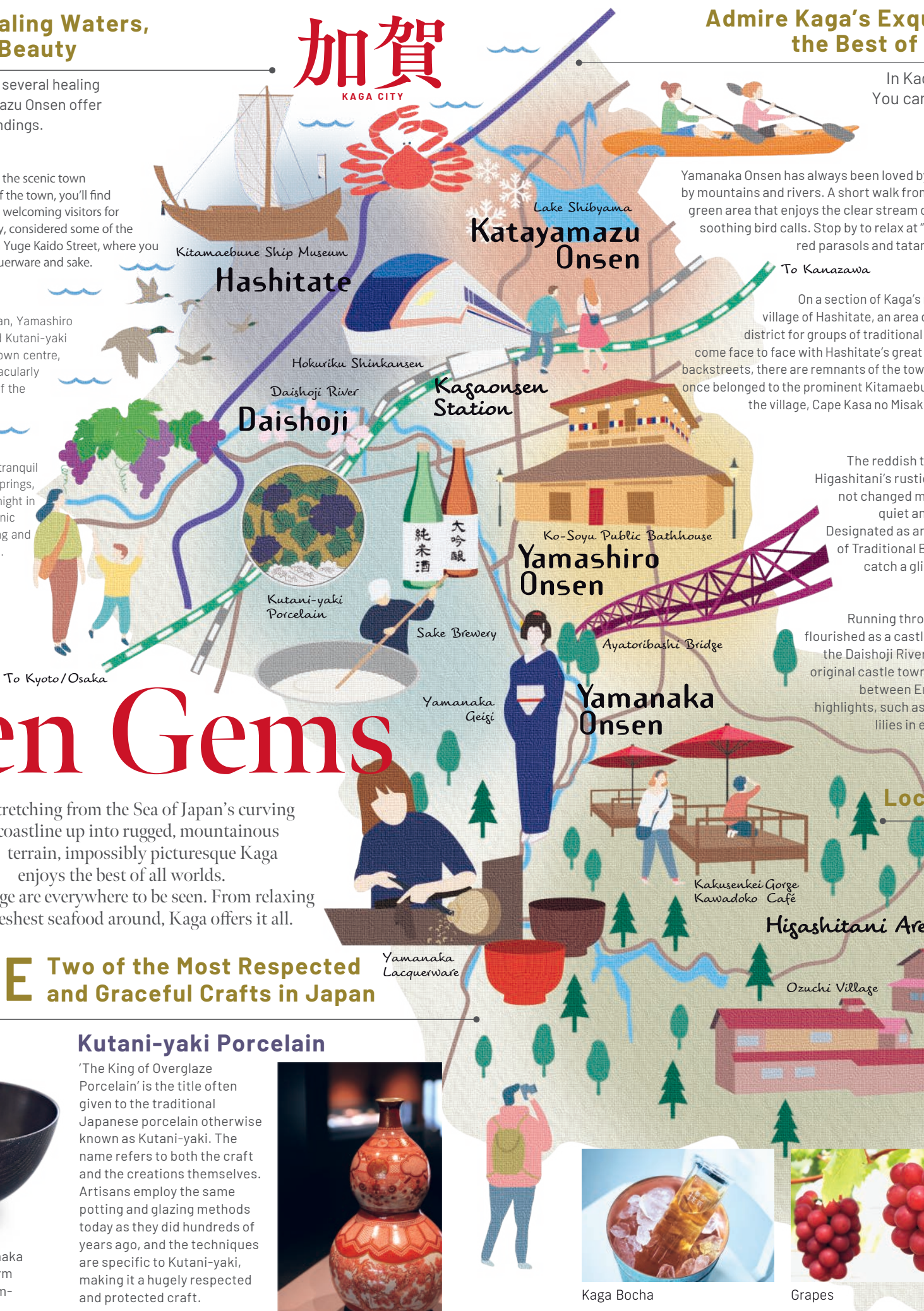
Kaga Bocha



Grapes



Japanese Sake



加賀
KAGA CITY

Lake Shibayama
Katayamazu Onsen

Kitamaebune Ship Museum
Hashitate

Daishoji River
Daishoji

Hokuriku Shinkansen
Kagaonsen Station

Ko-Soyu Public Bathhouse
Yamashiro Onsen

Ayatoribashi Bridge
Yamanaka Onsen

Higashitani Area

Ozuchi Village

Sake Brewery

純米酒
大吟醸

Kutani-yaki Porcelain

Yamanaka Lacquerware

Kakusenkei Gorge
Kawadoko Cafe

To Kyoto/Osaka

To Kanazawa

加賀 KAGA



Centre of Japan

Easily accessible by train from Tokyo or Osaka, the Kaga City area is located in the centre of Honshu (the main island of Japan), between sea and mountains, in an area of many hot springs.



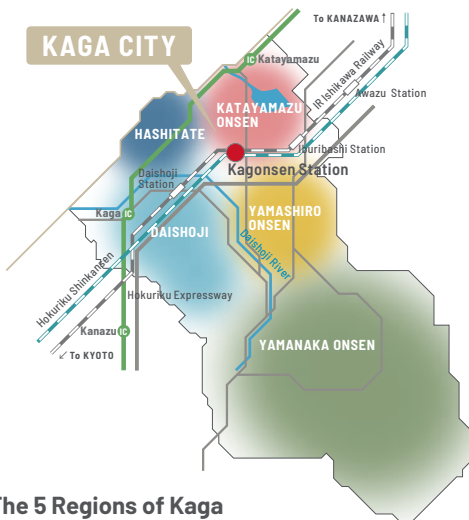
Getting around KAGA

By Train

- Tokyo** <<< Hokuriku Shinkansen (2h43min) >>> Kagaonsen Sta.
- Osaka** <<< Hokuriku Main Line Limited Express (1h20min) >>> Tsuruga <<< Hokuriku Shinkansen (37min) >>> Kagaonsen Sta.
- Kyoto** <<< Hokuriku Main Line Limited Express (55min) >>> Tsuruga <<< Hokuriku Shinkansen (37min) >>> Kagaonsen Sta.
- Nagoya** <<< Hokuriku Main Line Limited Express (1h36min) >>> Tsuruga <<< Hokuriku Shinkansen (37min) >>> Kagaonsen Sta.
- Kanazawa** <<< Hokuriku Shinkansen (18min) >>> Kagaonsen Sta.

By Air

- Haneda** <<< (1h) >>> Komatsu Airport <<< Bus (30min) / Taxi (25min) >>> Kagaonsen Sta.
- Narita** <<< (1h20min) >>> Komatsu Airport <<< Bus (30min) / Taxi (25min) >>> Kagaonsen Sta.
- TAIPEI (Taoyuan)** <<< (3h) >>> Komatsu Airport <<< Bus (30min) / Taxi (25min) >>> Kagaonsen Sta.
- SHANGHAI (Pudong)** <<< (2h) >>> Komatsu Airport <<< Bus (30min) / Taxi (25min) >>> Kagaonsen Sta.
- SEOUL (Incheon)** <<< (2h) >>> Komatsu Airport <<< Bus (30min) / Taxi (25min) >>> Kagaonsen Sta.



The 5 Regions of Kaga

Yamanaka Onsen, Yamashiro Onsen, Katayamazu Onsen, Daishoji and Hashitate are the 5 regions of the Kaga City area; each of them has a rich history and unique local culture.



Kaga City Tourism Association
TEL 0761-72-6678 (Japanese only)
info@visitkaga.jp



visitkaga.jp



@VISIT.KAGA.AREA



Rabea Gebler

Artisan / Based in Yamanaka Onsen



Rabea, a former product designer originally from Germany, came to Japan in 2020 with the wish to study traditional wood crafts.

Her interest in being part of the making process of objects as well as her long fascination in "urushi (Japanese lacquer) eventually led her to learning the making of Japanese lacquerware at the Ishikawa Prefectural Institute of Yamanaka Lacquerware.

Since she graduated from the institute in 2024, she has worked as a woodturner and urushi artist in Yamanaka Onsen.